

MODIFICATIONS IN SE 13 ENCL. 11
INCORPORATED IN THE AWT 12 IN AWT 13
DT 7-3-2001 IN THE NO. 1000
LAYOUT OF VACANT LAND BUREAU
FILE 1000-13-10-1000-1000-1000
1000-13-10-1000-1000-1000
1000-13-10-1000-1000-1000
1000-13-10-1000-1000-1000

THIS DRAWING HAS BEEN TAKEN FROM
DRAWING NO. 55 P. 6

LAYOUT PLAN OF SECTOR XVII

Abs. Abs. 49 (14) 36 (15)

MODIFICATION IN PLAN LAYOUT PLAN OF SECTOR-VIII WITH VARIOUS OPTIONS CONSIDERED BY THE GREENING COMMITTEE MEETING HELD ON 08-07-2012. WIDE ITEM NO. 101-2012 AND ONE OF THE MAIN OBJECTS OF THE MODIFICATION IS TO PROVIDE A LOT OF LAND FOR DETAIL DRAINAGE NOTIFICATIONS IN THE MODIFIED LAYOUT PLAN OF SECTOR-VIII ROBINH. OTHERWISE IN THE M.F.P./SC.S/MRTS/VOLT.

The Proposal has been approved for the following reasons:-

In File No. 83-97/2, vide item No. 91/2012:

Hold No. 83-97/2, vide item No. 91/2012:

DETAILED DEVELOPMENT AUTHORITY
OF CANTONMENT

Approved on:	30 th June 2012	By:	Secy. Cantt.
Civil Engrg.	03.07.2012		
Coastal Engrg.	04.07.2012		
Vide letter no.	44/2012	Dated	05/07/2012
Signed	M. NODD SAKE		
Dedication	Dis/DV/KC		

NOTE

- 1 PROPOSED MODIFICATION IN LAY OUT PLAN OF SECTOR XVIII ROBINH BY INTERCHANGING THE USE OF PLOTS 3:6 HAG OF LAND FROM ALL PLOTS TO GROUP HOUSING AREA 2:03 HAC OF LAND (BLOCK E).
- 2 WORKING GIRL HOSTEL 0:46 HAG (BLOCK E).
- 2.9 HAG OF LAND FROM GROUP HOUSING TO ALL PLOTS IN BLOCK E IS APPROVED BY COMM (PLG.) ON 3-8-01. IN FILE FPM/1003-16/2001/10

NOTES:

H.S. - HIGHER SECONDARY SCHOOL
H.S. INTS. - RAILWAY NURSERY SCHOOL
C - ELECTRIC SUB STATION
CS - CONVENT SHOPPING

60 MT. SPACE VOID
CE/C 14 LETTER NO. 11(0)
CC/INTS/INTS/DA/INTS/INTS/INTS

1. ALL DUS. FOR LUGS & LUGS ARE NOT STORING
DUS. FOR M.S. ARE FOUR STORING
2. FOR DETAILS OF POCKETS REFER POCKET LAYOUTS
3. CONCLUDE POINTS & LUGS OF POCKET WITH THE
POINTS & LUGS OF POCKET LAYOUT

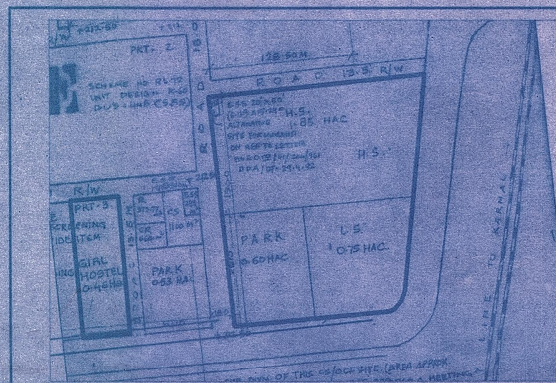
NOTE

- APPROVED BY CIVIL ENGINEERING AND REFERRED TO CIVIL ENGINEERING
- UNIT DESIGN APPROVED BY EXPERT COMMITTEE OF C.E.A. BY CIVIL ENGINEERING
- FOR DETAIL OF DESIGN REFER DETAIL AND DESIGN DRAWING REF. CIVIL ENGINEERING
- CHANGE IN DESIGN NUMBER OF POINTS MADE AS PER THE DESIGN OF EXPERT COMMITTEE
- REFERENCE CHANGED IN CIVIL AS APPROVED BY C.E.A.
- REF. NO. PFR/10322-166 DT 24.05.85

NOTE:

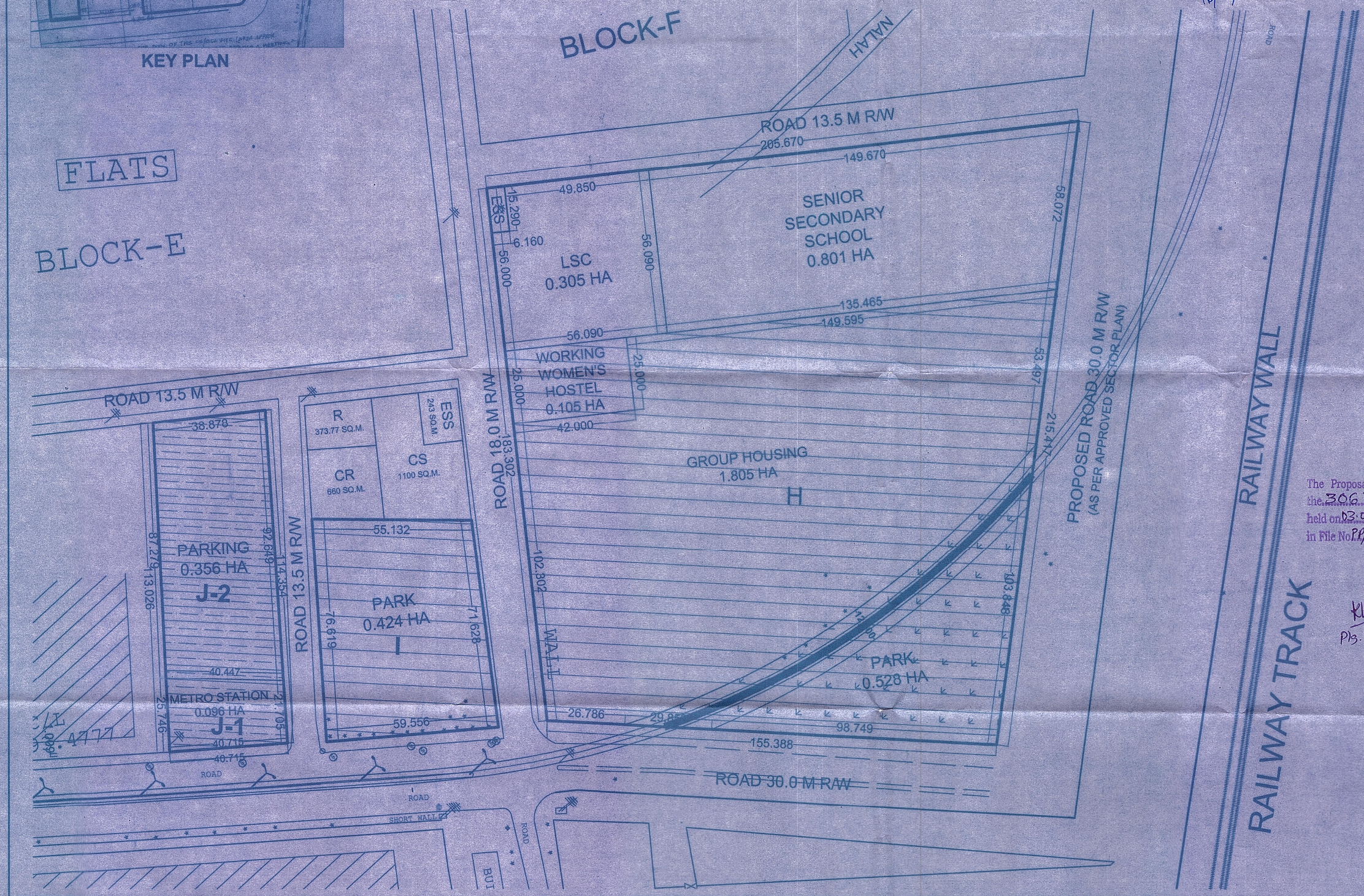
- LS OFF FACKET IN BLOCK E HAS BEEN
REMOVED BY SCREENING COMMITTEE VICE TEND
5015 (C) IN 1973. NEW JERSEY PAC OF COPIES
IN 1973. 1973. 1973.
- THE MO HOUSING. WHICH COULD HAVE BEEN
INCORPORATED AS PER THE LATEST PLANS. SUPPL
BY EX EN (EX PLAN) RPT 2 LINE NO FOLIO 11

612/c



KEY PLAN

FLATS
BLOCK-E



DELHI DEVELOPMENT AUTHORITY
HUPW-0000000000
VERIFIED
This proposal was considered at the
306 Screening Committee
Meeting held on 3.7.12
vide Item No. 41.2012
Dy. Director (Arch.) Coord
16/08/12

DELHI DEVELOPMENT AUTHORITY
ROHINI PROJECT PLANNING & DESIGN

AREA STATEMENT AS PER:

A) APPROVED LAYOUT

SL. NO.		AREA (IN HA)
1	HIGHER SECONDARY SCHOOL	1.850
2	LOCAL SHOPPING CENTRE (LSC)	0.750
3	PARK	0.600
	TOTAL	3.200
1	GIRLS' HOSTEL	0.460

B) MODIFIED PART LAYOUT PLAN (AS PER MPD-2021 NORMS)

i. AREA 3.553 HA

SL. NO.		AREA (IN HA)
1	SENIOR SECONDARY SCHOOL	0.801
2	LOCAL SHOPPING CENTRE (LSC)	0.305
3	ESS (EXISTING)	0.009
4	WORKING WOMEN'S HOSTEL	0.105
5	GROUP HOUSING	1.805
6	PARK (INCLUDING VIA-DUCT)	0.528
	TOTAL	3.553

ii. AREA 0.452 HA - POCKET 'J'

SL. NO.		AREA (IN HA)
1	METRO STATION (J-1)	0.096
2	PARKING (J-2)	0.356
	TOTAL	0.452

LEGEND
[Symbol] LAND REQUIRED BY DMRC ON TEMPORARY BASIS
[Symbol] LAND REQUIRED BY DMRC ON PERMANENT BASIS

NOTE:
1. IN POCKET H REQUEST IS FOR 2.5225 HA OF LAND. HOWEVER, OUT OF THE 3.553 HA PART AREA 2.438 HA (AREA OF GROUP HOUSING, WORKING WOMEN'S HOSTEL AND PARK) AND POCKET J (0.424 HA) TO BE CONSIDERED FOR ALLOTMENT TO DMRC ON TEMPORARY BASIS.
2. POCKETS J-1 (0.356 HA) FOR PARKING AND J-2 (0.096) FOR METRO STATION TO BE CONSIDERED FOR ALLOTMENT TO DMRC ON PERMANENT BASIS.
3. THE DEVELOPMENT CONTROL NORMS FOR CONSTRUCTION OF METRO STATION AND OTHER PROPOSED FACILITIES WILL BE AS PER MPD - 2021.
4. THE PROPOSAL WAS APPROVED BY 306TH SCREENING COMMITTEE MEETING HELD ON 03.07.2012 VIDE ITEM NO. 41:2012 IN FILE NO. PPR/SEC 5/2001/MRTS/AS OPTION-3.

The Proposal has been approved by the 306th Screening Committee held on 03.07.12 vide item No. 41:2012 in File No. PPR/SEC-5/MRTS/VOL I

DELHI DEVELOPMENT AUTHORITY
CERTIFIED
Approved in 306th Screening Committee Meeting 03.07.12 vide Item No. 41:2012
Sign: Vinod Sakle
Name: VINOD SAKLE
Designation: Dir (Plg) R
31/07/2012

KK
Plg. Asstt.

A.D (Plg) II

DD (Plg)

(FILE NO: PPR/SEC 5/2001/MRTS)

MODIFICATION IN THE PART LAYOUT
PLAN OF SECTOR - XVIII, ROHINI

SCALE 1:1000
DATE APRIL 2012
PLG. ASSTT./ PLG. OFFICER [Signature]
ASSTT. DIR. (PLG) [Signature]
DY. DIR. (PLG) [Signature]
DIRECTOR (PLG) [Signature]
31/07/2012

ROHINI
PROJECT OFFICE NEW DELHI 11008
DRG. NO. 1

612/c

