

## **MULTIGYM**

Rs. 1124/- PM (for Members)

Rs. 2247/- PM (for Non-Members)

## **SWIMMING CHARGES**

Swimming pool – (30M x 40 M) and Learner's Pool (15M x10M)

Seasonal Pass (6 Months)

for Member only - Rs. 1800/-

Seasonal Pass (DDA Staff) - Rs 500/-

Monthly Pass (Members) - Rs 500/-

Monthly Pass (DDA Staff) - Rs. 100/-

Temporary Members - Rs 1500/-

(3 Months)

### **Daily Dip**

a) Member - Rs. 30/- Per Dip

(For Permanent Member only)

b) Guest - Rs 120/- Per Dip

(Accompanied with permanent member)

The members who are desirous of Daily Dip are required to fill the form and get it signed by the medical officer & take clearance from Accounts Office/ PVSC.

## **Special Instruction for Institutions**

1. Institution (School/Colleges) may book /hire the swimming pool between 10 AM to 2 PM on hourly basis on payment.
2. Swimming Pool can be booked for a swimming meet between 10 AM to 2 PM on payment of Rs. 10000/- per day.
3. Organization/institution may cancel their booking, but in such cases 25% deposit will be deducted as cancellation charges.
4. Duration of Swimming pool – (1<sup>st</sup> Apr to 30<sup>th</sup> Sep.)

## **DELHI DEVELOPMENT AUTHORITY** **PASCHIM VIHAR SPORTS COMPLEX**



**A-6, PASCHIM VIHAR, NEW DELHI – 110063**  
**(Near Shri Balaji Action Medical Institute)**  
**OFFICE – 25261165, Fax:25261123**

## PASCHIM VIHAR SPORTS COMPLEX

Paschim Vihar Sports Complex has been serving the citizens of West Delhi since 22<sup>nd</sup> May 1990 with following sports facilities:-

\*Cricket \*Multi-purpose Ground \*Table Tennis \*Lawn Tennis (Hard & Clay courts) \*Tennis Practice Wall \*Squash \*Badminton \*Skating \* Cricket Practice Pitches \*Basketball \*Volleyball \*Taekwondo \* Mini Football Ground in Green Area \*Children Park with playing equipment \*Multi-gym \*Billiards/Snooker \*Aerobics \*Swimming Pool and Learners Pool.  
\*Sports Goods Shop \* Canteen.

### TIMINGS:

SUMMER : 6:00 A.M. TO 9:00 P.M

WINTER: 6:30 A.M. TO 8:30 P.M

(All sports facilities remain closed on Mondays & three national holidays i.e 26<sup>th</sup> Jan 15<sup>th</sup> Aug & 2<sup>nd</sup> Oct.)

### OFFICE

Working Hours – 10:00 A.M to 5:00 P.M

(Office will remain closed on Sundays, 2<sup>nd</sup> Saturdays and all Gazetted Holidays.)

### DRESS CODE

Sports dress code is strictly observed. Entry is restricted to the I Card holders only.

### SMOKING / DRINKING

These are strictly prohibited in the complex.

### MEMBERSHIP

- |                               |   |             |
|-------------------------------|---|-------------|
| a) Individual                 | - | Rs. 10000/- |
| b) Govt. Servant              | - | Rs. 5000/-  |
| c) Associate                  | - | Rs. 5000/-  |
| d) Sr. Citizen (Above 60 Yrs) | - | Rs. 2000/-  |
| e) Temporary (3 Months)       | - | Rs. 1000/-  |
| f) Spl. Temporary Membership  | - | Rs. 2500/-  |

(Only for Govt. Official residing within a radius of 2 KMs. From the Complex)

+12.36 % Service Tax is to be paid extra.

### MONTHLY MAINTENANCE CHARGES

Rs. 120/- PM for Member

Rs. 50/- PM each for Spouse & Dependent children.

+12.36 % Service Tax is to be paid extra.

(Between 5 Yrs to 21 Yrs)

For Sr. Citizen (No Dependent children are allowed)

Rs. 75/- PM for Member

Rs 30/- for Spouse above 60 Years.

Rs 50/- for Spouse below 60 Years.

+12.36 % Service Tax is to be paid extra.

### PAY & PLAY CHARGES

- |                            |                   |
|----------------------------|-------------------|
| a) Casual                  | Rs 40/- - Per Day |
| b) Guest (with Member)     | Rs 25/- - Per Day |
| c) Student (10 AM to 4 PM) | Rs 10/- - Per Day |
- (Subject to production of school **I Card**)

### BOOKING / HIRING OF GROUND

Sat, Sun & Gazetted Holiday Rs. 5000/- + Rs. 200/- (Groundsmen Charges)

Working Days Rs. 3000/- + Rs. 200/- (do)

(No refund of booking charges once a facility is booked and not used, for any reason.

### COACHING

Activities	Member	Non-Member	In Week	Timing
Aerobics	Rs.600/- + S. Tax	Rs.900/- + Service Tax	5 days	5 to 7 PM 9 to 10 A.M.
Billiards	Rs.40/- (for½ hour)	Rs.40/- (for½ hour)	6 days	4 to 6 PM
Cricket	Rs.600/-	Rs.900/-	5 days	4 to 6 PM
LawnTennis	Rs.600/- Rs.900/-	Rs.900/- Rs.1200/-	3 days 6 days	4 to 7 PM
Tennis Advance	Rs.600/- Rs.900/-	Rs.900/- Rs.1200/-	3 days 6 days	4 to 7 PM
Skating	Rs.300/- Rs.600/-	Rs.600/- Rs.900/-	3 days 6 days	4 to 6 PM
Basket Ball	Rs.400/-	Rs.600/-	5 days	4 to 6 PM
Table Tennis	Rs.900/- Rs.1100/-	Rs.1400/- Rs.1800/-	3 days 5 days	4 to 6 PM
Taekwondo	Rs.400/-	Rs.600/-	3 days	4 to 6 PM



**Coaching Classes/Scheme (being organized in PVSC) :-**

Sports/ Game/ Discipline	Name of Coach/Agency	Schdl./ Timings	Fee per Month	
			Member	Non-Member
Cricket	Sh. V.K. Jain	4 to 6 P.M.	Rs.600/-	Rs. 900/-
Lawn Tennis	Saba Tennis Academy	4 to 7 P.M.	Rs.600/- Rs.900/-	Rs. 900 /- Rs. 1200/-
Lawn Tennis Advance	Pro-Tennis Academy	4 to 7 P.M.	Rs.600/- Rs.900/-	Rs. 900 /- Rs. 1200/-
Table Tennis	Sh. Deepak Jha	4 to 6 P.M.	Rs.900/- Rs.1100/-	Rs. 1400 /- Rs. 1800/-
Basket Ball	Sh. Virender Singh	4 to 6 P.M.	Rs.400/-	Rs. 600/-
Taekwondo/ Karate	Sh. Alok Gupta	6 to 7 P.M.	Rs.400/-	Rs. 600/-
Skating	Roller Skating School of India	5 to 7 P.M. 8 to 9 P.M.	Rs.300/- Rs.600/-	Rs. 600 /- Rs. 900/-
Aerobics	Ms. Shelly Sisodia	5 to 7 P.M. 9to10 A.M.	Rs.674/-	Rs. 1011/-

**Licensed Facilities is available in This Complex :-**

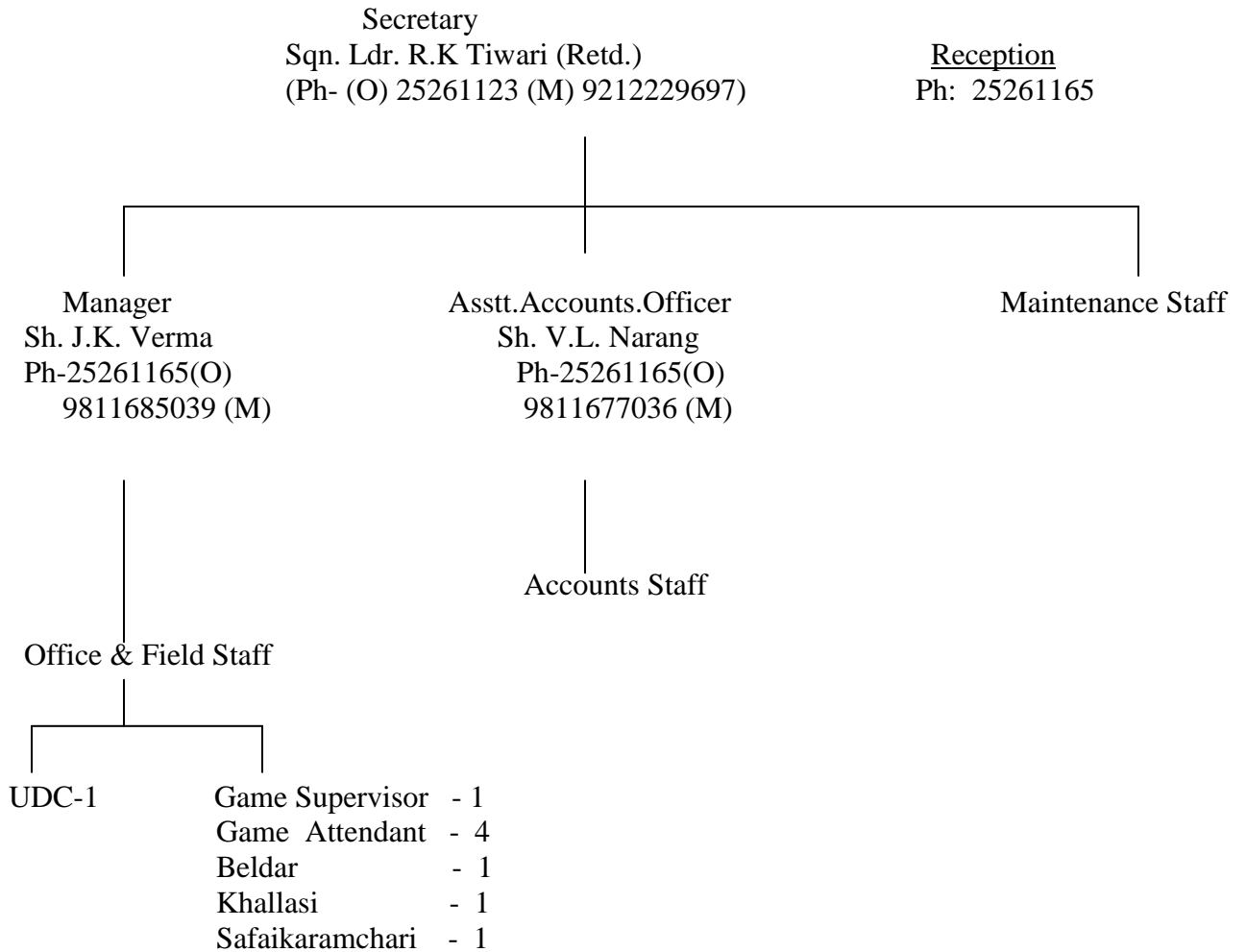
- Snack Bar
- Pro-Shop

**Multi-gym in Green Areas Under This Complex:-**

- Viks Puri
- Sunder Vihar
- Tagore Garden
- PVSC

# ORGANISATIONAL CHART

## PVSC



## Entrance fee and Subscription Fee for Membership

The following are the rates for entrance fee and monthly subscription. These are subject to revision from time to time.

Membership	Entry Fee (Non-Refundable RS.)	Member (Rs.)	Dependant (Rs.)	Remarks
<b>A). Individual Memership</b>  <ul style="list-style-type: none"> <li>▪ Indian Citizen</li> </ul> <ul style="list-style-type: none"> <li>- Govt. Service 5,000/-</li> <li>- Others (non service) 10,000/-</li> <li>- Staff Membership 1,000/-</li> <li>- Sr. Citizen 2,000/-</li> </ul>				Only Spouse is dependent
		120/-	50/-	
		120/-	50/-	
		40/-	30/-	
		60/-	25/-	
<b>B). Corporate Membership</b>				
<b>C). Temporary Membership</b>				
<ul style="list-style-type: none"> <li>▪ Indian Citizen</li> <li>▪ Foreign Citizen</li> </ul>	1,000/- 2,000/-	--	120/- 120/-	
<b>D). Special Temporary</b>	2,500/-	-	-	Including Dependents
<b>E). Special Honorary</b>	Exempted	100/-	40/-	
<b>F). Absentee Membership</b>	Nil	30/-	15/-	
<b>G). Guest Membership</b>  (Accompanied with the member)	Nil	25/- Per day	-	
<b>H). Casual Membership</b>	40/- per day			

**Note :** \* Govt. Servant - Employees of Central Govt., State Govt. and Local Bodies i.e. MCD, New Delhi Municipal Council, Delhi Jal Board and Delhi Vidyut Baoard. All the charges / fee are subject to change without any notice. Entry fee of membership is non refundable.  
 \*Service Tax @12.36 % extra

## MEMBERSHIP DETAILS OF PVSC

Membership Type	G. Total
Individual	1804
Corporate (CM)	-
Honorary (HM)	-
Non Resident Indian (NRI)	-
Special Honorary (SH)	-
Foreigner (FM)	-
Staff Member (SM)	80
Associate (AM)	13
Special Temporary (STM)	-
Senior Citizens (CZ)	556
Temporary (TM)	200
Tenure M/ship	-